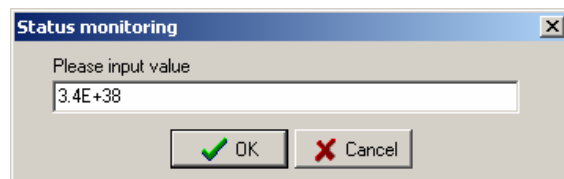
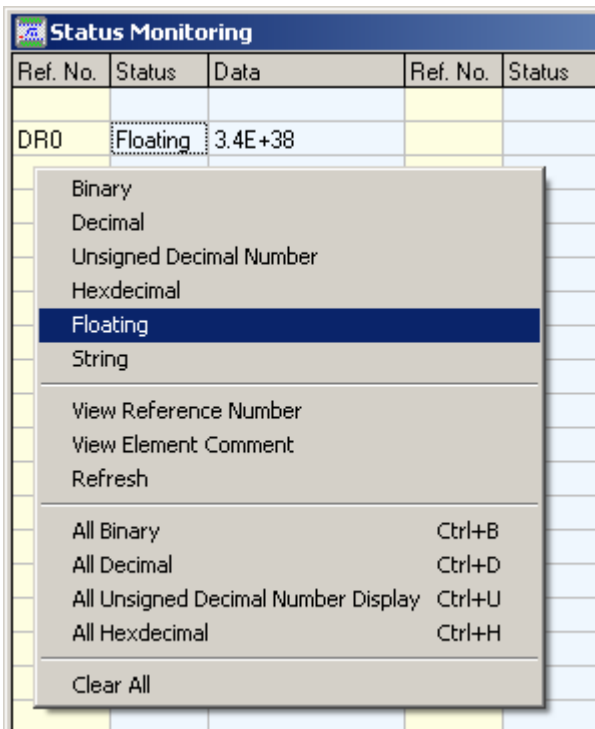


<< WinProladderV2.30-Build:6414 Change note >>

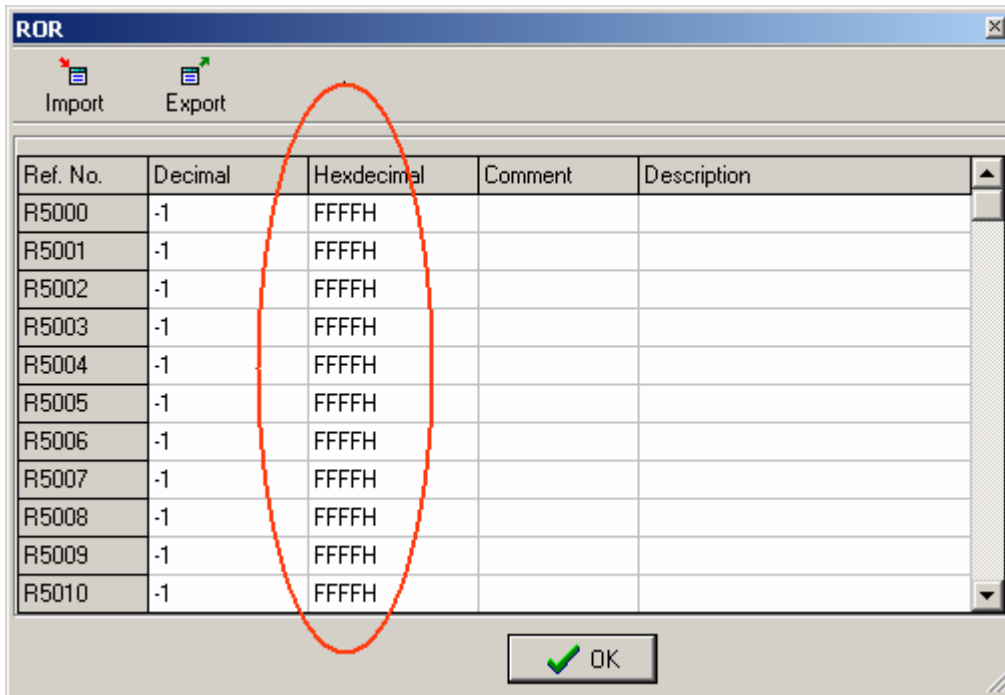
New Addition Function Instruction :

- 1. F200.I -> F(Conversion of integer to floating number)
- 2. F201.F -> I (Conversion of floating point number to integer)
- 3. F202.FADD(Floating point number addition)
- 4. F203.FSUB(Floating point number subtraction)
- 5. F204.FMUL(Floating point number multiplication)
- 6. F205.FDIV(Floating point number division)
- 7. F206.FCMP(Floating point number compare)
- 8. F207.FZCP(Floating point number zone compare)
- 9. F208.FSQR(Floating point number square root)
- 10. F209.FSIN(SIN trigonometric instruction)
- 11. F210.FCOS(COS trigonometric instruction)
- 12. F211.FTAN(TAN trigonometric instruction)
- 13. F212.FNEG(Change sign of the floating point number)
- 14. F213.FABS(Floating point number absolute value)

Floating point number can be entered and displayed in status page :



ROR Registers can display both Decimal and Hexdecimal :



Correcting the bug which ladder program can be saved to PLC by Modem :

