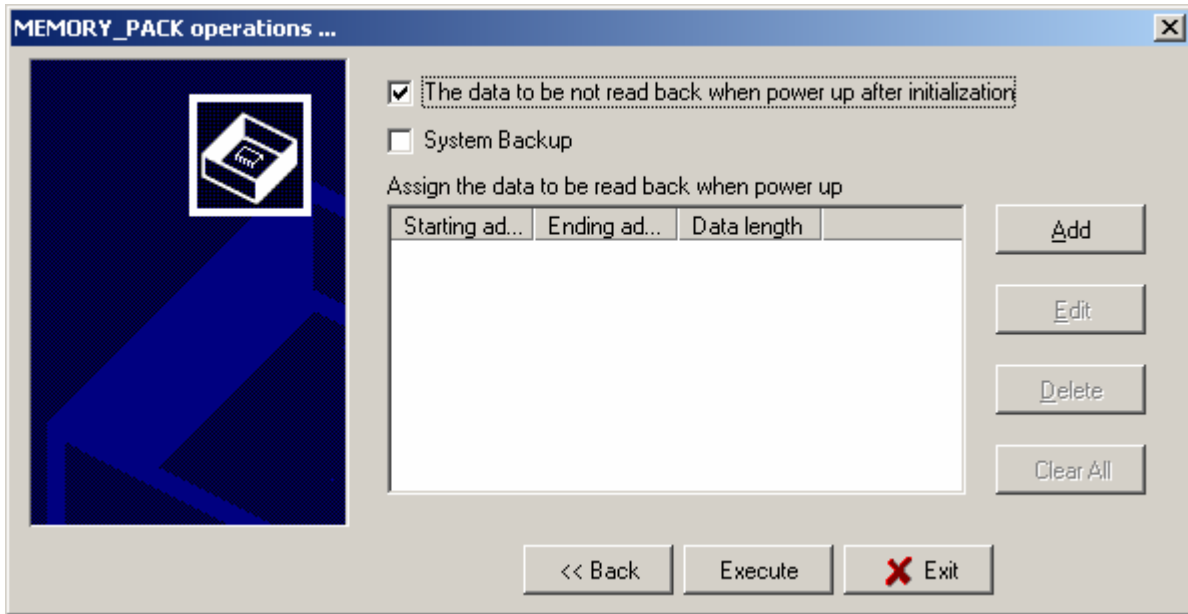
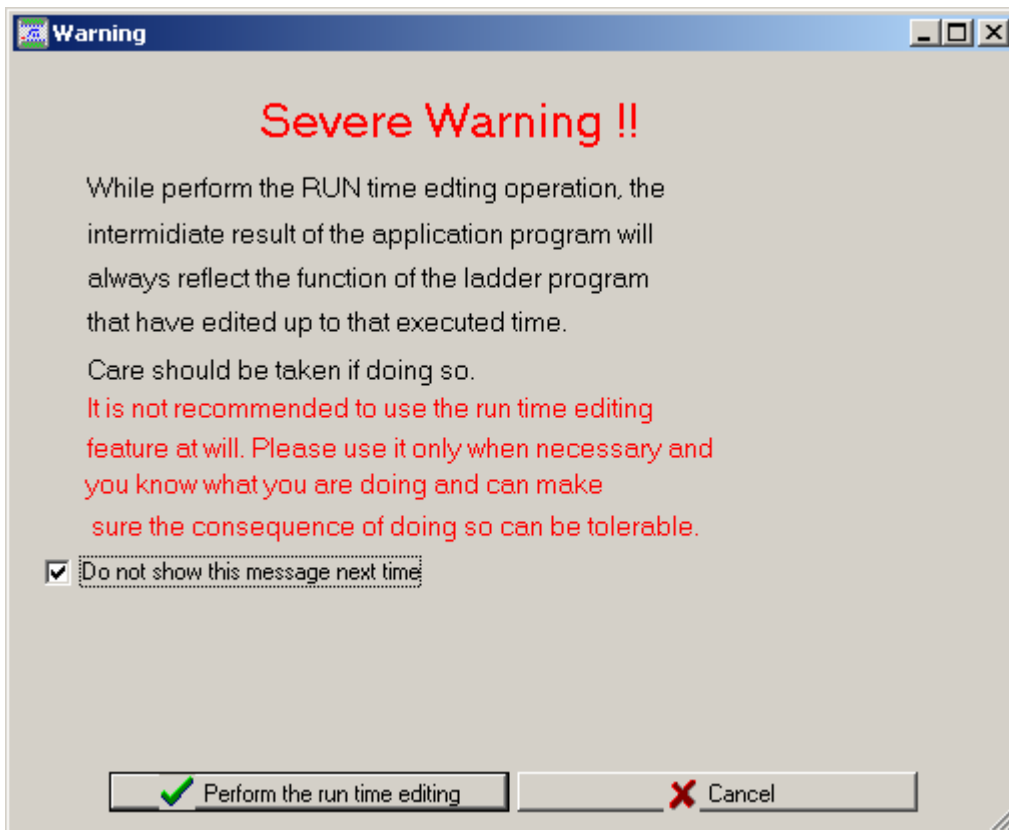


WinProladder V2.32 Change note :

1. Add the check Item “ The data to be not read back when power up after initialization” which in MEMORY_PACK operations window :



2. Add the warning page when user want to execute “run editing” mode :



3. Debug bellows :

- a. When PLC(FBe-Series) in on-line mode, if entered value into DRXXXX in status page then PLC(FBe-Series) will require stop.
- b. When execute System Backup item, if selecting both Timer/Counter Register and File Register then File Register will be cleared.
- c. Restricting entered RXXXV, RXXXZ, RPxPx, and DPxPx in status page.
- d. If the length of table over 62 words in project while saved project into PLC will occur communication format not correct.
- e. Modifying Time_Out setting.
- f. When PLC in on-line mode, if changed port0's baud rate then PLC will show " Connection Fail! want to connect again?" message.
- e. If execute "RUN" command and off line immediately, sometimes can't end processing instantly.