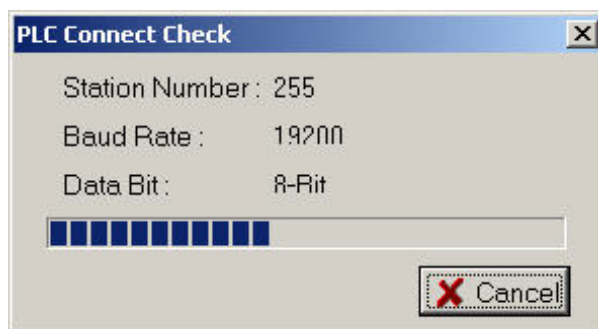
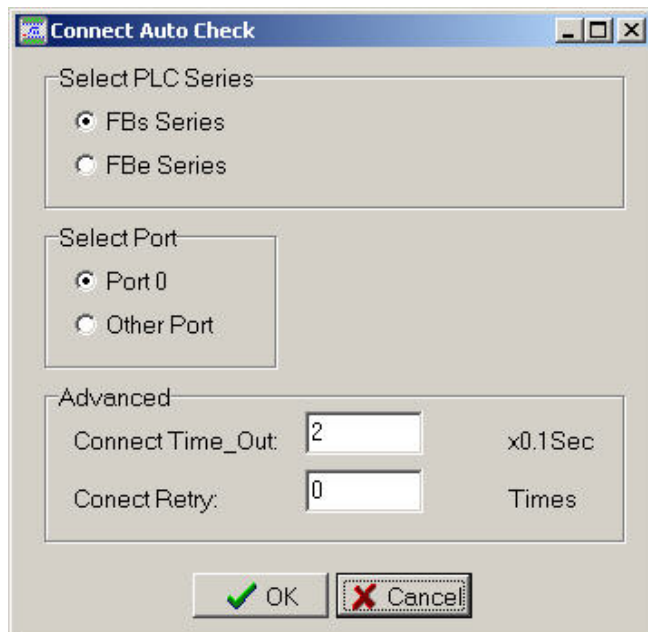
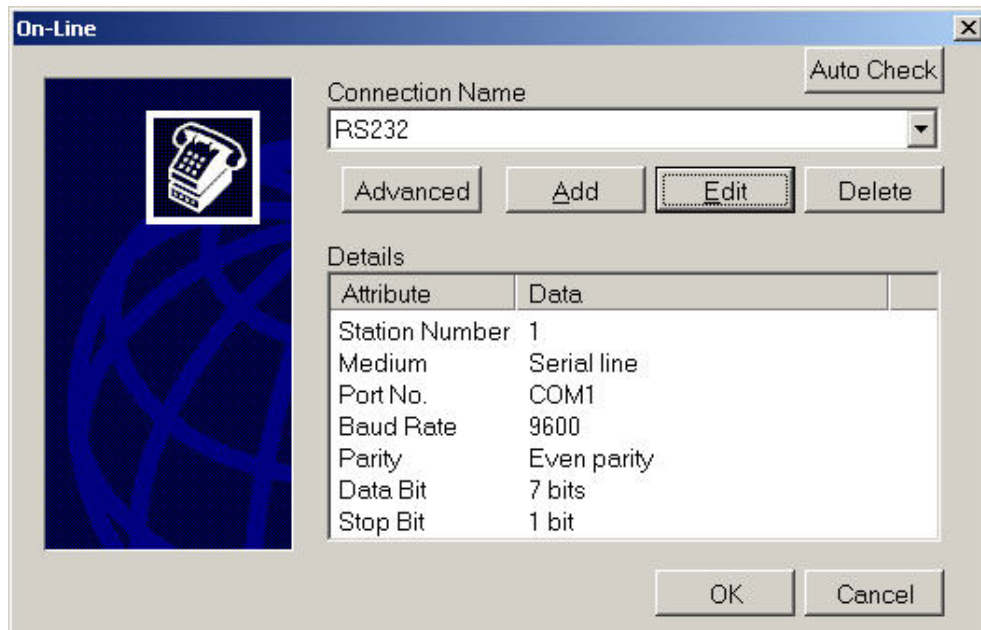
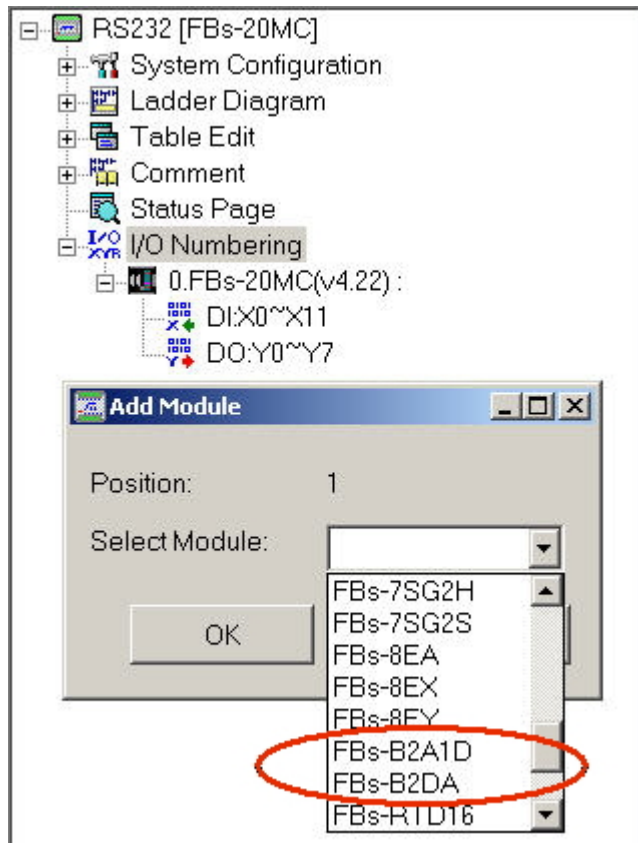


WinProladderV2.33 change note :

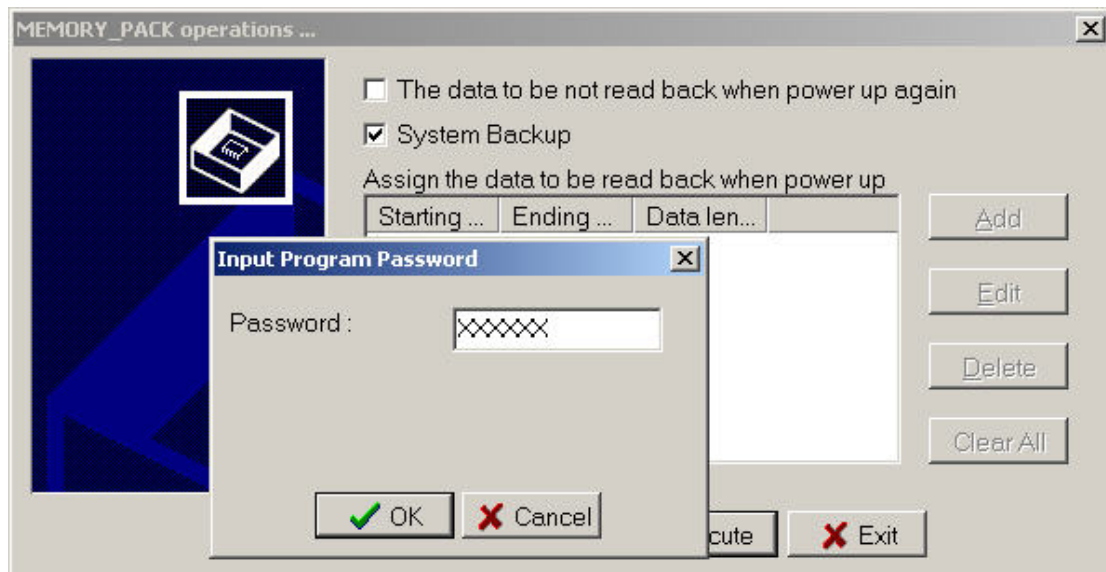
1. Add PLC connection Auto Check function



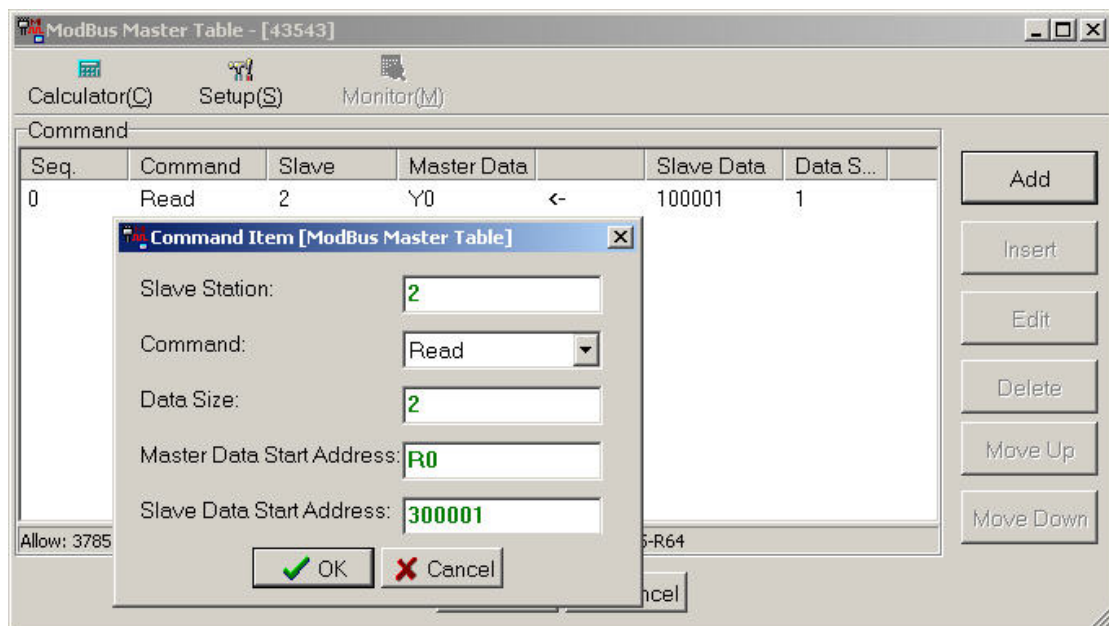
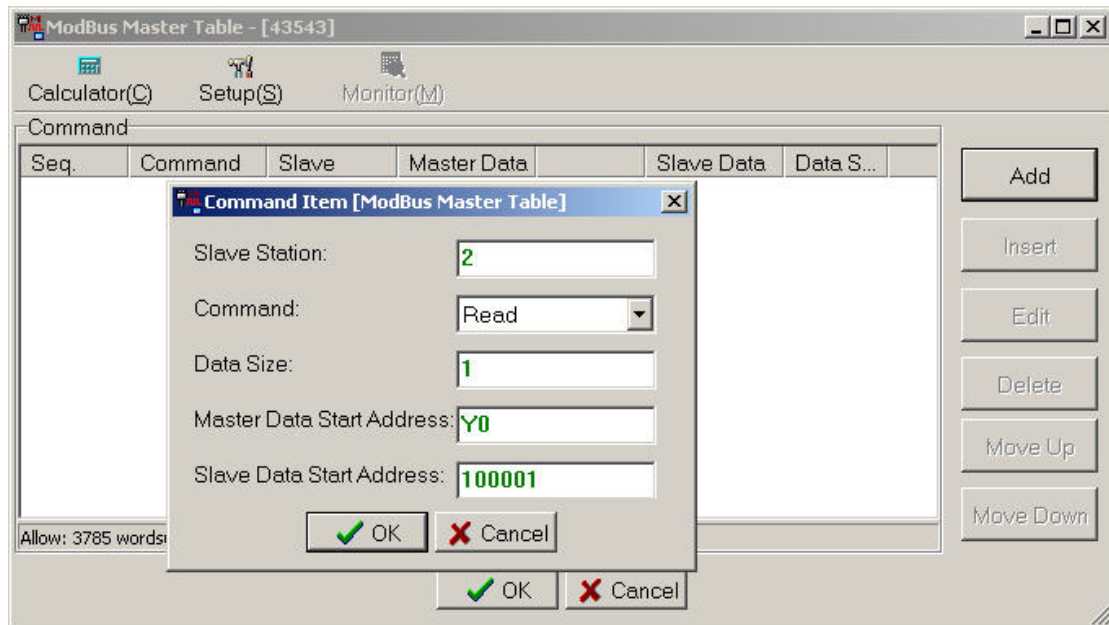
2. Add B2A1D、B2DA module information



3. if ladder has been setting password, it will request password when executing MEMORY_PACK System Backup.



4. ModBus communication table can enter 1xxxxx · 3xxxxx code(slave).



5. Add on line HELP function(only function instruction).

The screenshot shows a software interface with a help window for the 44DP.BYMV function block. The help window is titled "General Purpose Link Table" and "Chm_eng". It contains a list of function blocks on the left, with "BYTE MOVE" selected. The main area displays the details for "44DP.BYMV", including its operands and a description. The description states: "When move control 'EN' = 1 or from 0 to 1 (P instruction), move Nsth byte within S to Nsth byte comprised of 8 bits. Starting from the lowest bit of the register, B0, each successive eight bits for B8-B15 form byte 1, etc...". It also notes that when the operand is 16 bit, the effective range of Ns or Nd is 0~1. For 32 bit (D instruction) operation, it will set the N value error flag "ERR" to 1, and do not carry out this instruction.

To the right of the help window, a ladder logic diagram shows the 44DP.BYMV block being used in a program. The block is connected to a network with EN, S, Ns, D, and Nd inputs. The output is connected to a coil labeled "M7 OFF".

6. FBs MA main unit can support FUN139(High speed PWM).

The screenshot shows the WinProLadder software interface. The main window displays a ladder logic diagram for a high-speed PWM function block (FUN139). The block is connected to a network with EN, Pw, Op, Rs, Ph, Or, and Wt inputs. The output is connected to a coil labeled "M0". The parameters for the block are: Pw: 0, Op: 0, Rs: 1, Ph: RO, Or: DO, Wt: RO. The software interface includes a menu bar, a toolbar, and a project tree on the left.

Debug items : Correct bug below.

1. MEMORY_PACK operation error(always execute System Backup).
2. The fonts of ModBus communication table too small.
3. Network copy can arrive 128 Words(64 Words before).
4. When modify the average of temperature must stop.