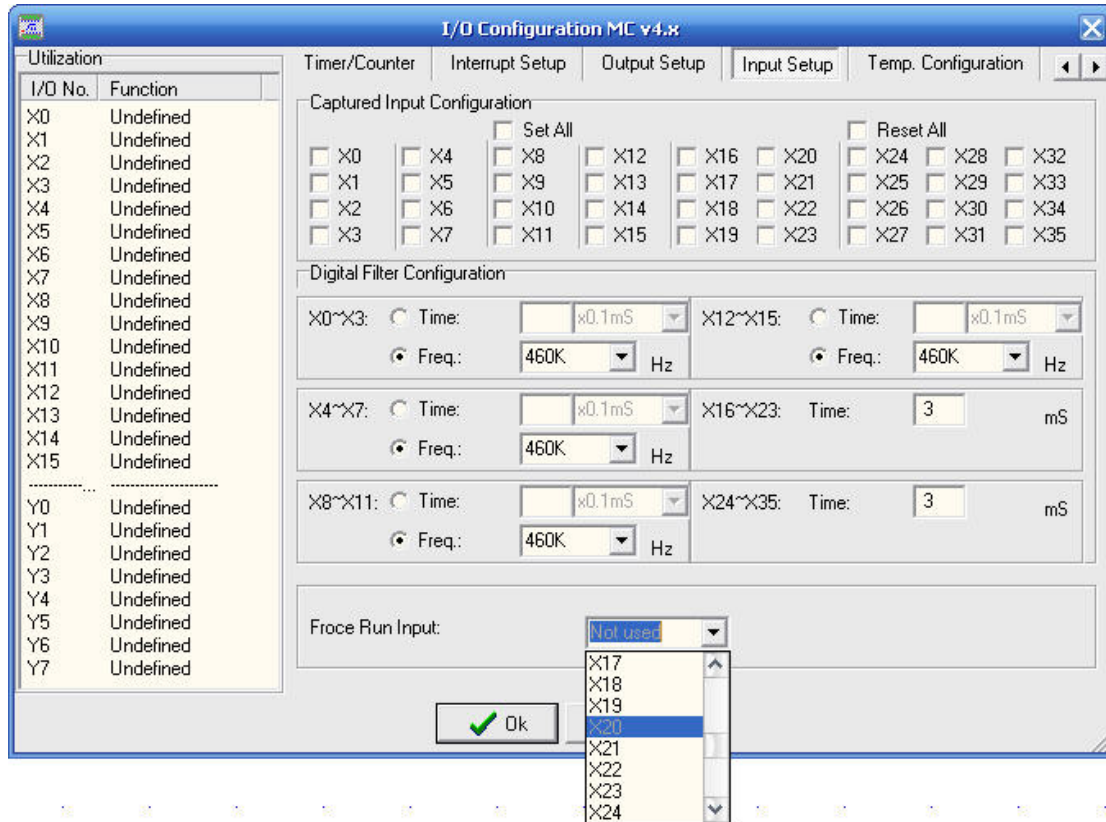
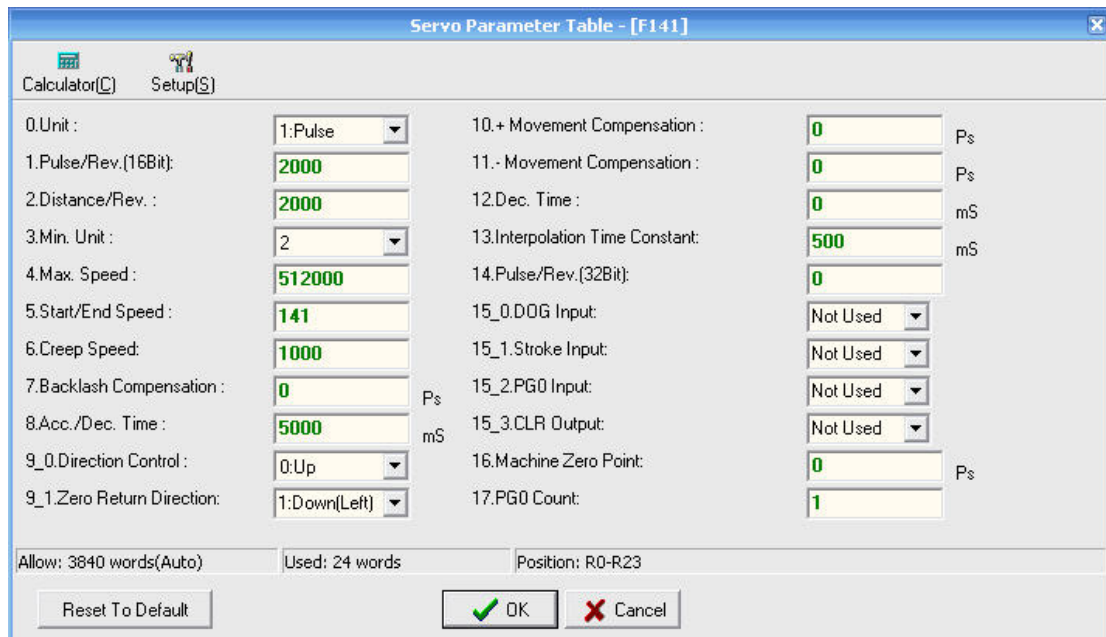


# WinProladderV2.34 ChangeNote

Add "Froce Run Input" setting item :



FUN141 add parameter 6、9-1、13、15-0、15-1、15-2、15-3、16 and 17 setting item:



FUN140 add DRVZ、MD0、MD0 and MD0 setting item:

Motion Command Item

Speed:

Movement:

Wait:

Go To:

Motion Command Item

Speed:

Movement:

Wait:

Go To:

Servo Program Table - [home]

Calculator(C) Setup(S) Monitor(M)

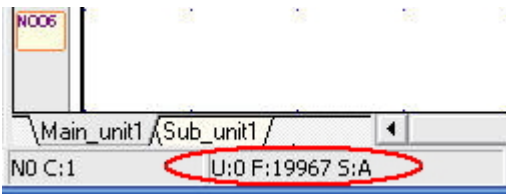
Servo Command

Step	Speed	Movement Action	Wait	Go To
1	SPD D0	DRVZ,MD0	WAIT TI...	GOTO E...

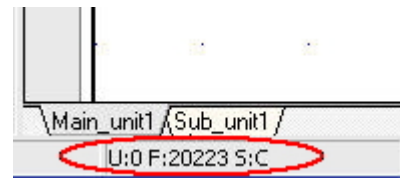
Allow: 2572 words(Auto) Used: 11 words Position: R5500-R5510

**Increasing Ladder memory size from 19967 word → 20223 word**

**Version 2.33**

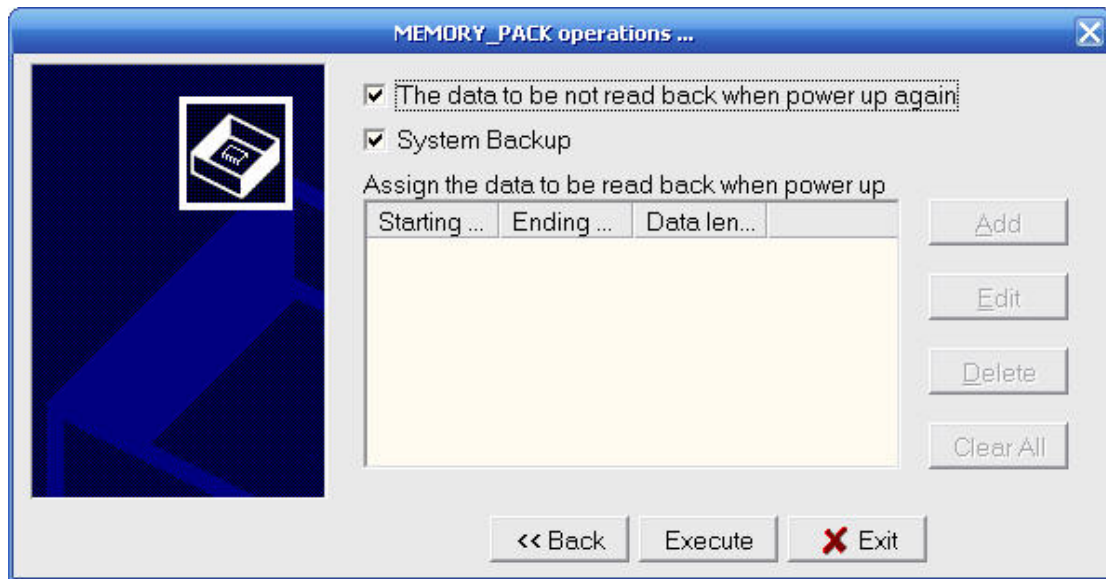


**Version 2.34**

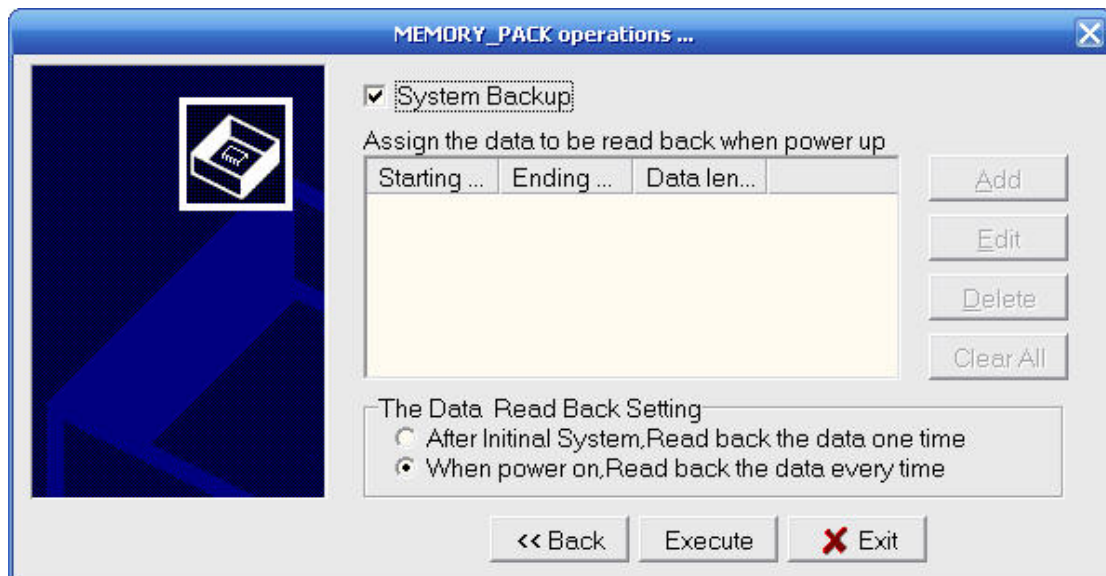


**Modifying MEMORY\_PACK configuration windows :**

**Version 2.33**



**Version 2.34**



**Debug :**

1. When one network(NXXX) arrive 16 rows, if execute insert function(Shift + Insert) then system edit will incorrectly.
2. Can't key in "2D3072" in ASCII Table.
3. When unidentified code in ROR area, connection must be rebuilt.
4. In on-line status, the delay time of Port3 and Port4 can't be configured correctly.