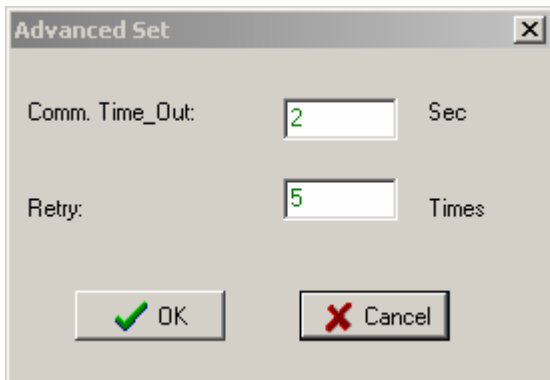
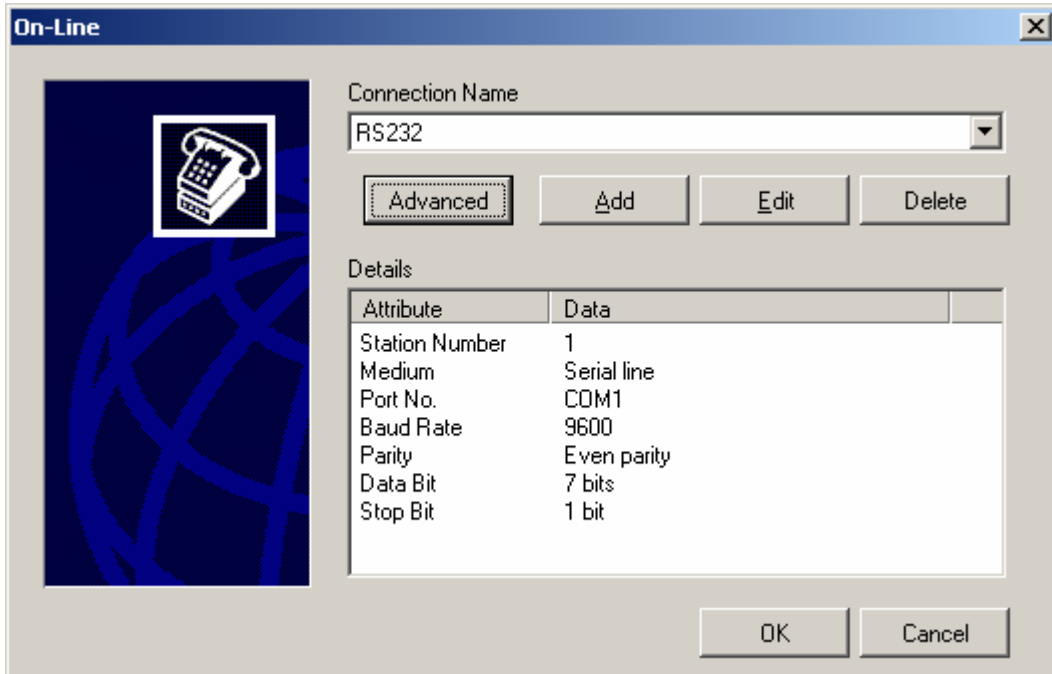
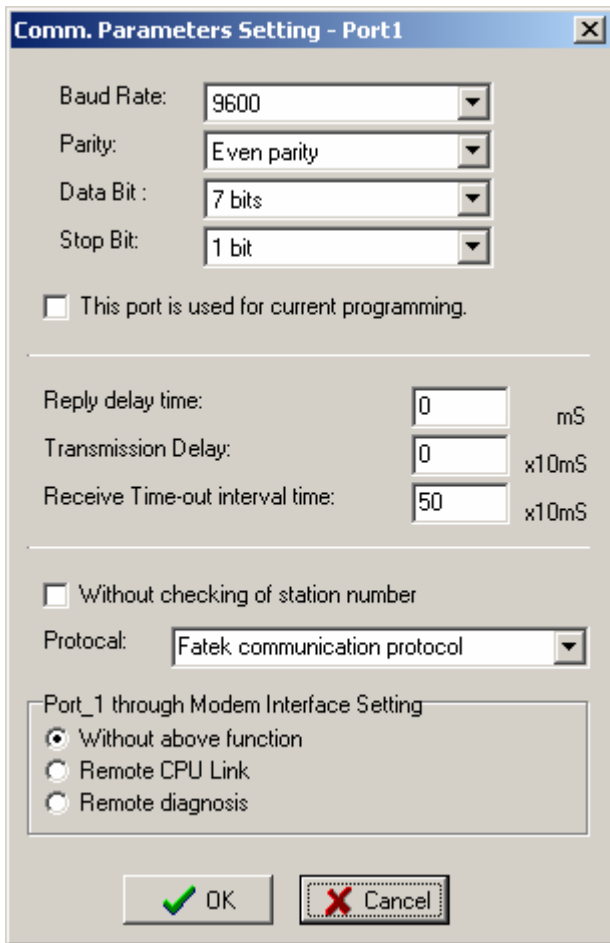


《 Winproladder Version 2.23 Build6318 change note 》

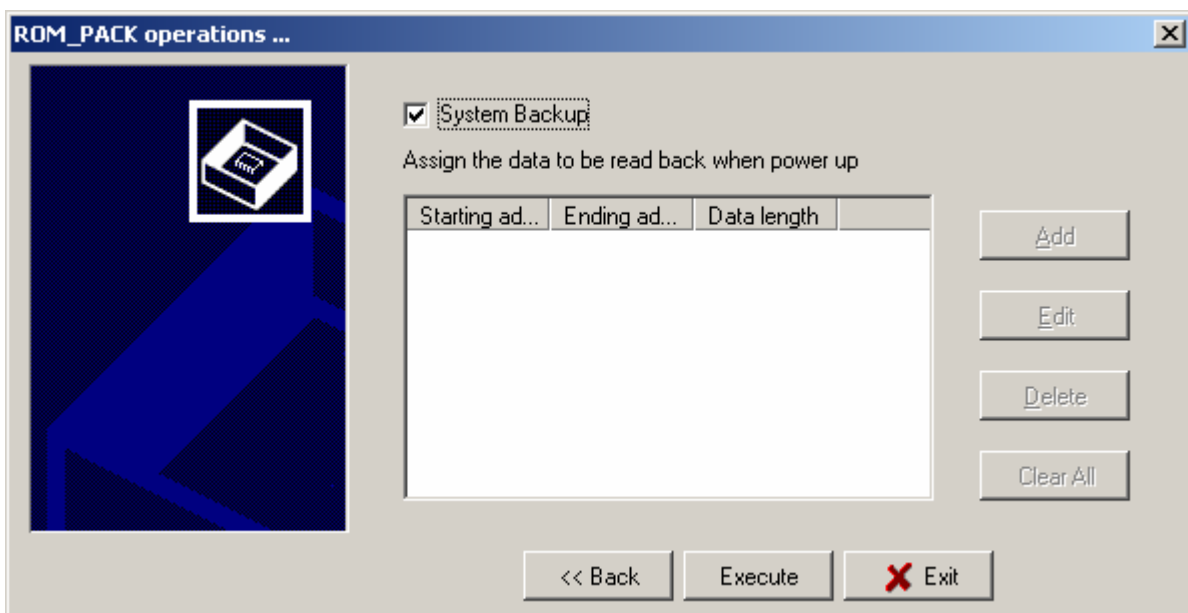
1. Increase the Time and Retry Setting for Communication Port( which in Advanced item )



2. Increase Link Time Out Setting and Modem Setting(only Port1) for individual Communication Port



3. Increase System BackUP item(for FBs ROMPACK)



4. Increase FUN93(HSCWR) can enter negative number.
5. Modify FBs line broken and re-on line compared process.
6. Increase FBs ROM\_PACK operation message display.
7. Revised the defect which FUN83(SPD) parameter\_1 can't enter X0~X7.
8. Revise 32-bit content display of SET/RST/ (+1) which in program area.
9. Revise 32-bit content display of FUN13(MUL) 、 FUN14(DIV) destination register which in program area.
10. Revised the defect when change PLC station number occurs “ Ladder\_Checksum\_Error ”.
11. Revised the defect which can't read and write the correct 32-bit data into ROR registers in WinProladder status page.