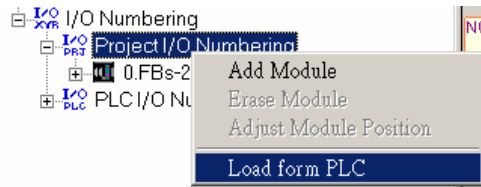


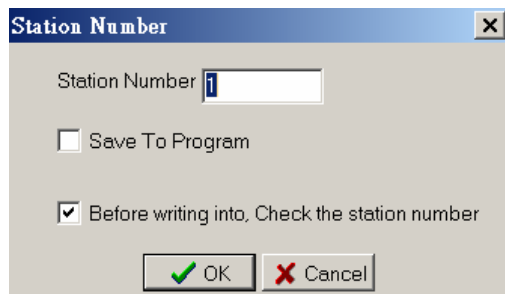
WinProLadderV2.36 Change Note

New features

1. Import I/O numbering from PLC



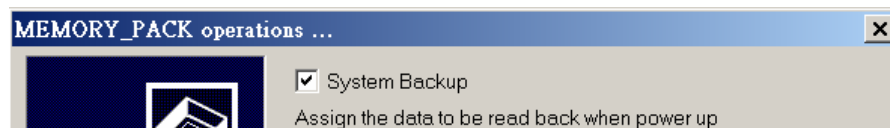
2. Check the existence of the PLC with the same station number that current edited PLC intent to change.



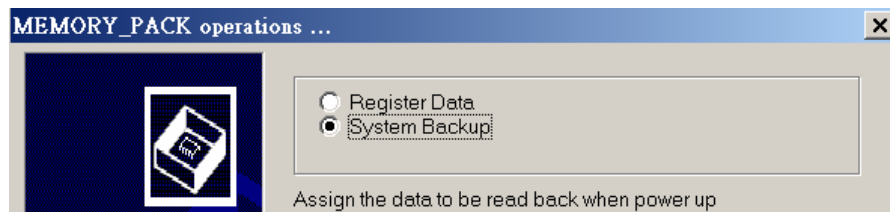
Modifications

1. ROM_PACK operation screen

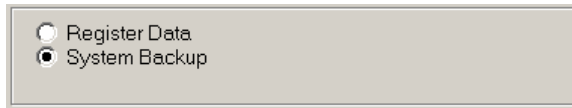
Original V2.35



New V2.36



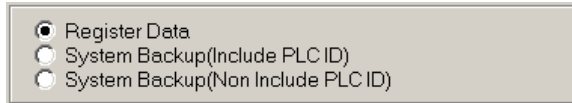
ROM_PACK operation screen will be displayed



A screenshot of a software window titled 'ROM_PACK operation screen'. It contains two radio button options: 'Register Data' and 'System Backup'. The 'System Backup' option is selected, indicated by a filled circle next to it.

If the PLC_OS is below V4.46

Or



A screenshot of a software window titled 'ROM_PACK operation screen'. It contains three radio button options: 'Register Data', 'System Backup(Include PLC ID)', and 'System Backup(Non Include PLC ID)'. The 'Register Data' option is selected, indicated by a filled circle next to it.

If the PLC_OS is V4.46 or after

2. Issue a warning message while quit from editing without writing updated program into ROM pack.
3. Issue a warning message while save the new program to PLC with the different station number embedded in the program.
4. Change the default printing margin to 8.

Bugs Fixed

1. Fix the bug that when disconnect then reconnect the PLC connection, the communication will encounter error situation very often.
2. Fix the bug that when perform the automatic PLC connection and the result is fail, the content of the communication script will be shown incorrectly.
3. Fix the bug that It will raise an unexpected error message “No sufficient program memory”, when the remaining space of the comment is below 20 bytes.
4. Fix the bug that when perform the column expansion at run time will let the CTR behind the column can not be executed.
5. Fix the bug that the improper action reacted to the keystroke of Ctrl+Alt+A/B/U/DD.
6. Fix the bug that when communicate with PLC via UDP, in heavy loaded network environment the status page display may show incorrect data irregularly.
7. Fix the bug that when the PLC station number is other than “1”, then the action of “clear data” will lead the link to be disconnected.
8. Fix the bug that can’t enter the floating point number when in the locale that use ‘;’ as the decimal point.
9. Fix the bug that miscalculate the I/O numbering of input register for 2ARTD4 and 2ATC4 module.